

Exhibition

Fragile Beauty: Photographs from the Sir Elton John and David Furnish Collection

 Closes Sunday, 5 January 2025

 V&A South Kensington

 £22 (includes donation)

[More info](#)



Exhibition

NAOMI In Fashion

 Closes Sunday, 6 April 2025

 V&A South Kensington

 £18 (includes donation)

[More info](#)

NATIONAL PORTRAIT GALLERY



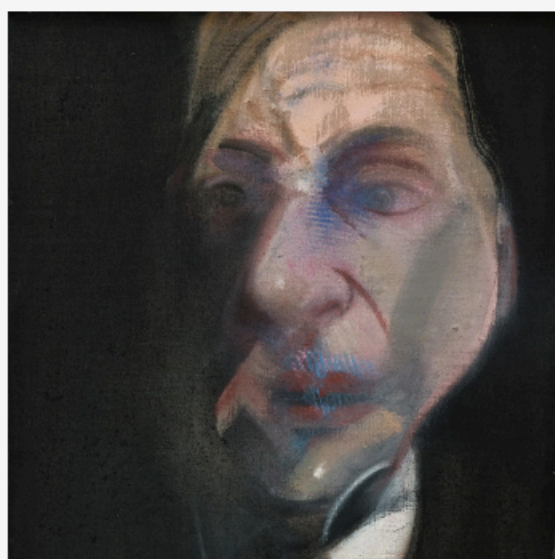
Herbert Smith Freehills Portrait Award 2024

11 July - 27 October 2024

Floor 2

Free to visit

The Herbert Smith Freehills Portrait Award returns to the National Portrait Gallery, showcasing the very best in contemporary portraiture



Francis Bacon: Human Presence

10 October 2024 - 19 January 2025

£23 / 25.50 with donation

Featuring works from the 1950s onwards, this exhibition will explore Francis Bacon's deep connection to portraiture



Taylor Wessing Photo Portrait Prize 2024

14 November 2024 - 16 February 2025

£8.50 / £9.50 with donation

Showcasing the work of talented young photographers, gifted amateurs and established professionals, the Prize features the very best of contemporary photography

Hayward Gallery

Exhibition

Haegue Yang: Leap Year

9 Oct 2024-5 Jan 2025



Exhibition

Huang Po-Chih: Waves

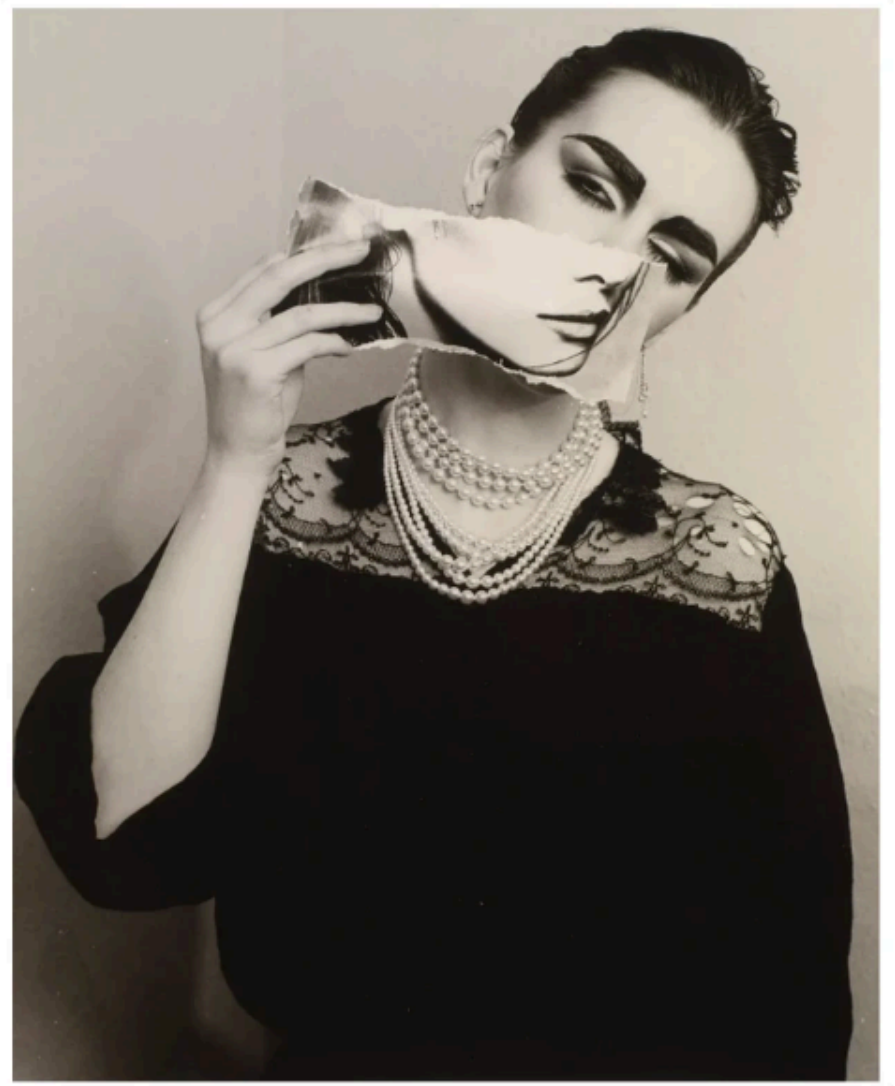
9 Oct 2024-5 Jan 2025



Exhibition

Linder: Danger Came Smiling

11 Feb-5 May 2025



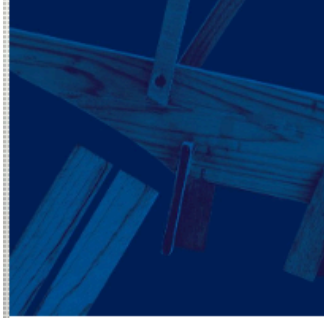


📅 Until 23 February 2025

Barbie®: The Exhibition

A major exhibition exploring the design evolution of one of the world's most famous dolls: Barbie®. Journey into the Barbie universe to discover rare, unique and innovative dolls dating from 1959 to the present day.

→ [BARBIE: BOOK YOUR TICKET](#)



📅 Free Display: Until 26 January 2025

Grazie Enzo: Contemporary Responses to Enzo Mari

Accompanying the retrospective exhibition 'Enzo Mari Curated by Hans Ulrich Obrist with Francesca Giacomelli', this free display showcases the work of 14 London-based designers, studios and collectives whose practices share an affinity with Enzo Mari's.

→ [GRAZIE ENZO: PLAN YOUR VISIT](#)



📅 Free Display: Until August 2025

Future Observatory: Tomorrow's Wardrobe

Discover the urgent research and innovation taking place to design a future for fashion that is both stylish and sustainable. It brings together a diversity of designers from across the fashion industry who are revolutionising the way we create, make, and wear clothes.



📅 25 October 2024 – 21 April 2025

The World of Tim Burton

Delve into the fantastical world of Tim Burton in this major exhibition exploring his remarkable creations and key collaborations with designers.

TICKETS ON SALE

→ [THE WORLD OF TIM BURTON: BOOK NOW](#)



📅 14 February 2025 – January 2026

PLATFORM: Bethan Laura Wood

Free to visit, the first of our new PLATFORM display will present the fascinating work of Bethan Laura Wood.

→ [PLATFORM: FIND OUT MORE](#)



📅 28 March – 17 August 2025

Splash! A Century of Swimming and Style

Explore a new exhibition celebrating our century-long love affair with swimming and the influence of design on everything from swimwear to art deco architecture.

→ [SPLASH!: FIND OUT MORE](#)



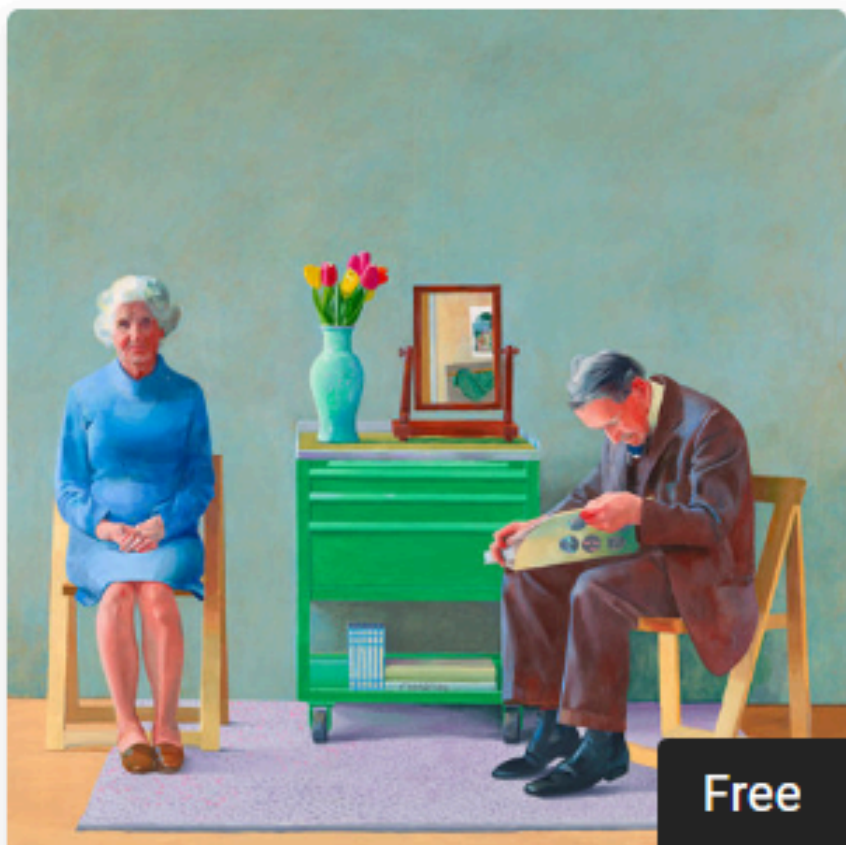
📅 6 June – 5 October 2025

More Than Human

A major exhibition bringing together art, science and radical thinking to ask how design can help our planet thrive by shifting its focus beyond human needs.

→ [MORE THAN HUMAN: FIND OUT MORE](#)

THE
NATIONAL
GALLERY



Free

EXHIBITION

Hockney and Piero: A
Longer Look

Until 27 October 2024



£

EXHIBITION

Van Gogh: Poets and
Lovers

14 September 2024 –
19 January 2025

What's on Locally



ARKLEY
FINE ART



BROADWAY GALLERY



HERTFORDSHIRE'S LARGEST EXHIBITION
LETCWORTH OPEN 2024
WED 18 SEP 2024 9:00 – SAT 9 NOV 2024 17:00

Letchworth Open, Hertfordshire's largest celebration of creative talent, is back and bigger than ever! This year, the exhibition showcases the works of 455 artists, making it the largest edition to date.



FAMILY ARTS
OCTOBER FAMILY ARTS
FROM SAT 12 OCT 2024 10:30

Get creative at one of our workshops in the Family Arts Studio at the Broadway Gallery!



HERTS
Visual Arts
PROMOTING
CREATIVITY

#NEWvember

HVAF'S WINTER CHALLENGE

1	Shades of Green	16	Water
2	Expressive mark making	17	Printing
3	All at sea	18	Inside or outside
4	The built environment	19	Autumn Landscapes
5	Unlimited Skies	20	Telling a story
6	Geometric	21	Pattern
7	Animal	22	Reflections
8	Pastels	23	Fantasy and Fun
9	Elements	24	Monotone
10	Graphics and Numbers	25	Figurative interpretations
11	Say it with flowers	26	Abstract-ed
12	Contemporary	27	The Natural World
13	Portraits	28	Shape
14	Texture	29	Still Life
15	Impressionism	30	Three Dimensions

Sunnyside
Rural Trust

Sunnyside, Hemel Hempstead, HP3 9BY

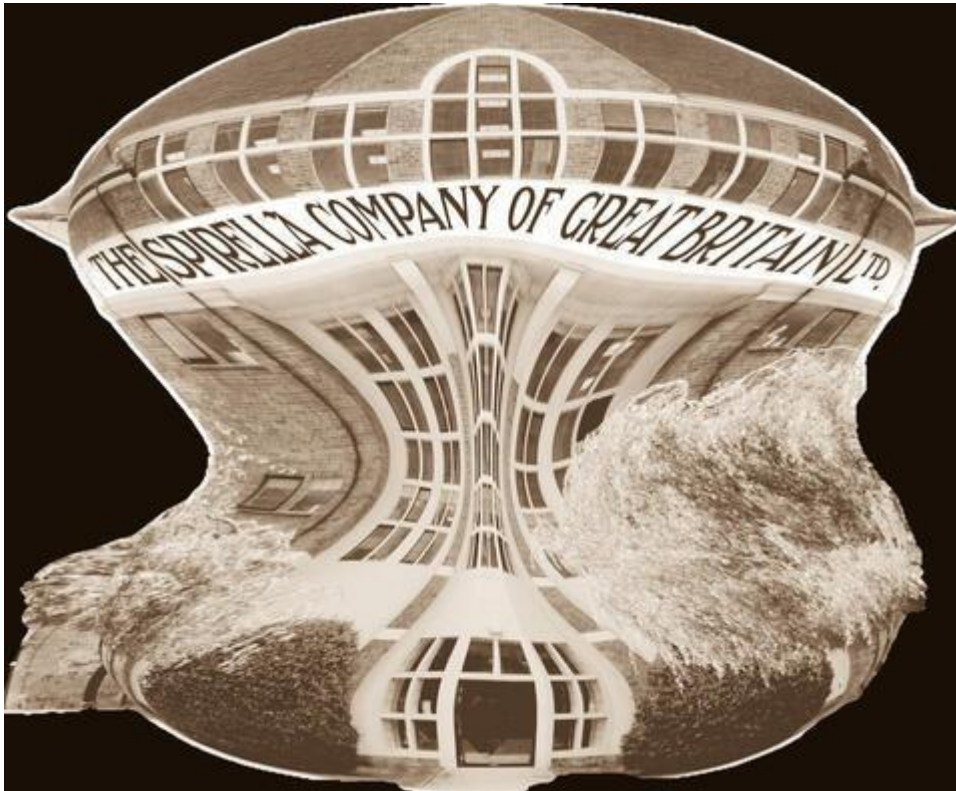
ARTS FAIR

A unique,
friendly Arts Fair
bringing you
local artists,
makers, writers,
bakers, holistic
therapies and
incredible live
music

7th September
5th October
2nd November
14th December
1st February
1st March

Anna's Funky Art

First Saturday of the month 11am to 4pm
annasfunkyart@gmail.com



SPIRELLA UNBOUND

Nov 28th – 21st Dec

Venue – Letchworth Broadway gallery

An exhibition of artwork inspired by the rich history of the Spirella building, Letchworth garden city. With work on display created by members of Herts Visual Arts Textile group.

Competitions



Harriet Kelsall Design Competition

Design a bespoke pendant celebrating the Cambridge area for a chance to see it brought to life by a goldsmith at Harriet Kelsall Bespoke Jewellery.

Close: **25th October 2024** [enter now!](#)



SCAN ME

Global Canvas Children's Art Competition

Entries are now open for Global Canvas 2025, till 14 February 2025! So pick up those pencils, paints and brushes, and enter your masterpiece. A global competition to celebrate the young wildlife artists of tomorrow. Find out more about this year's competition below.



Enter Global Canvas 2025



Artwork by Lucas

2025 Theme

“Coexistence – how can humans and wildlife live in harmony?”

There is only one planet – but it is a shared one.

When an elephant eats a farmer's crops, a lion eats their cattle, or a snow leopard eats their sheep – it creates conflict between these animals and local communities. No one would want to see a family go hungry or lose their livelihoods, but it's just as important animals aren't pushed out of their home ranges or are unable to find food.

That's why finding ways to support local people to live alongside the wildlife around them is essential to conservation and the most worthwhile conservation work balances the needs of both wildlife and people.

This is the very meaning of coexistence.